

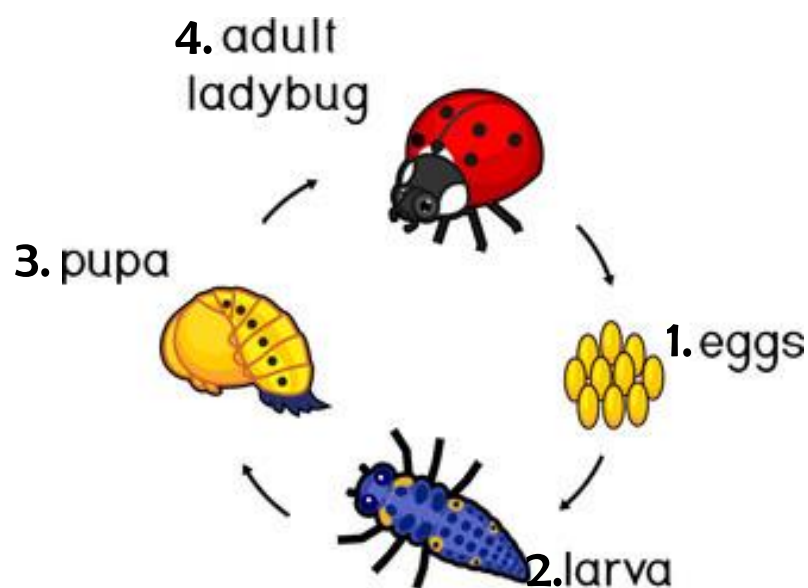
Name:

Date:

Activity 3 – Lifecycles

Minibeast Lifecycles

A lifecycle means the different stages of life for any living thing. As animals and plants grow, they change. Animals can look very different throughout their different life stages. Let's look at ladybirds as an example:



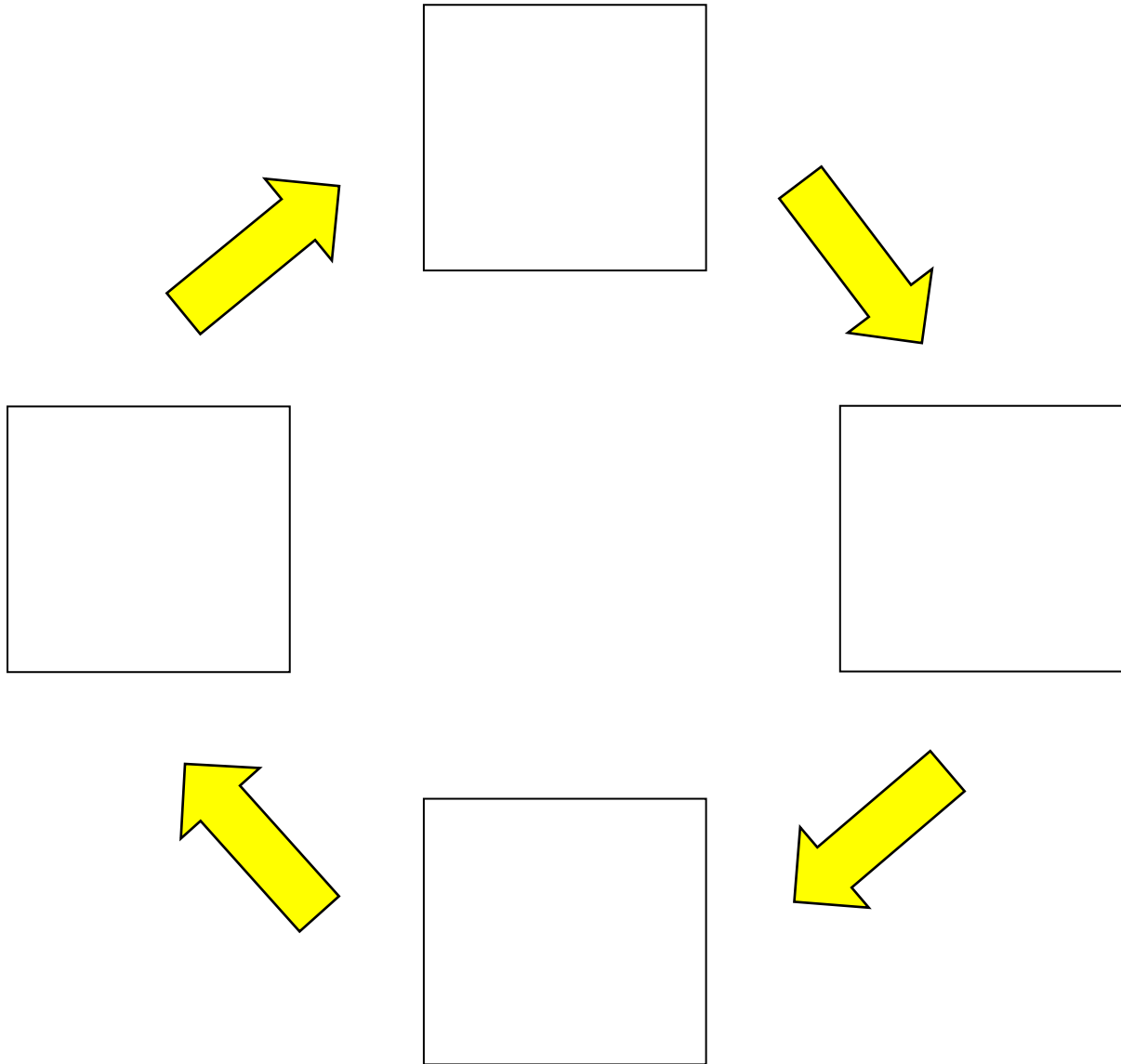
1. Ladybirds start out as eggs
2. Eggs hatch into larva, which is an *immature* form of a ladybird – a bit like a child compared to an adult!
3. The ladybird larva will attach itself to a leaf and stay completely still for up to two weeks. During this time, they are known as *pupa* and their body totally transforms from a larva into an adult ladybird! This total change is known as *metamorphosis*.
4. Now the ladybirds are adults, they lay eggs themselves and the lifecycle starts over again!

Now you've seen the ladybird lifecycle, can you figure out which stage goes where in the lifecycle of a butterfly? Are they similar to ladybirds? Are there any differences? Get cutting and sticking in the activity on the following page and complete the butterfly lifecycle!

Name:

Date:

Red Admiral Butterfly Lifecycle



Eggs on a leaf



Adult Butterfly



Pupa in a chrysalis



Caterpillar

