

## **Minibeasts Topic Quiz**

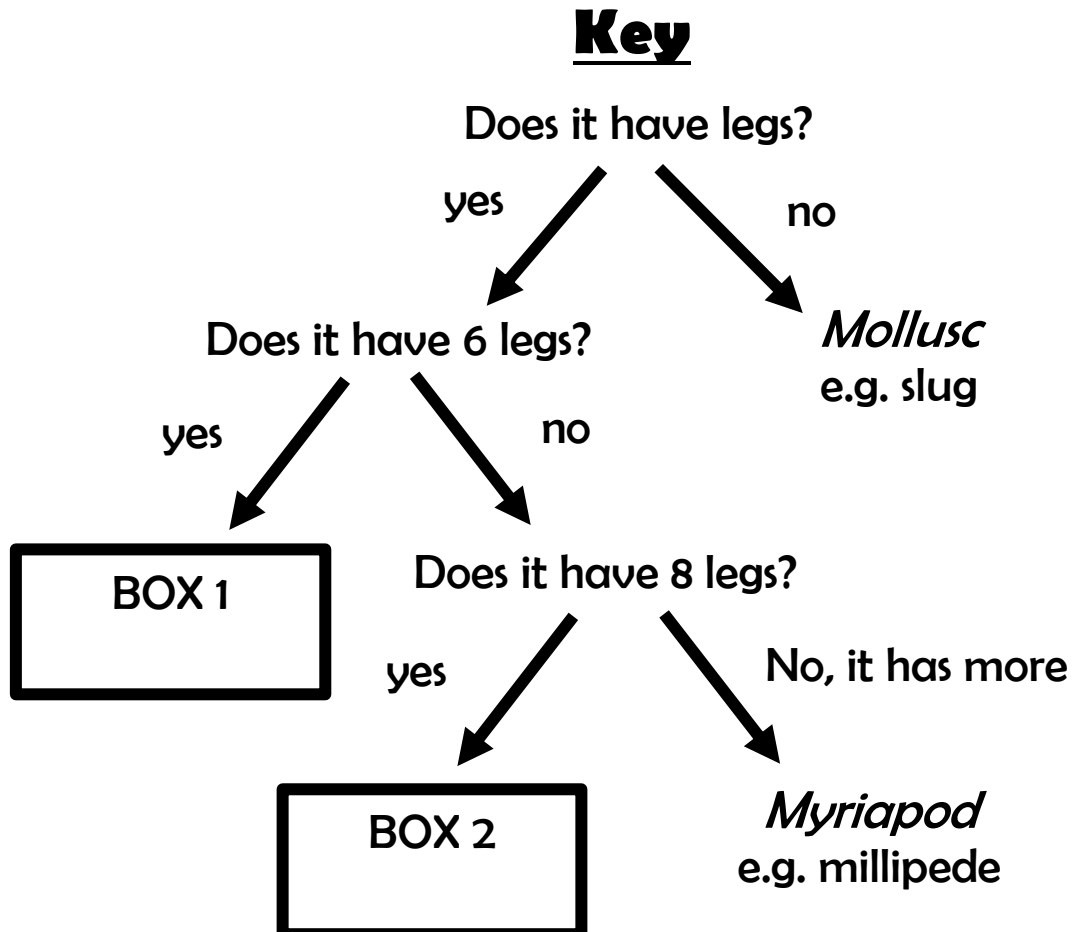


*“Hi there! Fezziwig here! Did you have fun looking at minibeasts? Did you become an insect expert, or is there still a little left to learn? Test your knowledge on the creepy, crawly and cool with my quiz! Good luck!”*

Two friends, Elliott and Nazmin, are going on a minibeast hunt!

1. They find their first minibeast on a branch. It has eight legs. What kind of minibeast is it?
  - a) Arachnid
  - b) Insect
  - c) Mollusc
2. They find a second minibeast under a rock, that they think is a mollusc. If they are correct, what could it be?
  - a) Beetle
  - b) Snail
  - c) Centipede
  - d) Wasp
3. On a nearby twig, there is a web. Elliott spots a dead fly in the web. He says he can see the fly's backbone. Nazmin says he is wrong because flies don't have backbones. What do they have instead?
  - a) A shell
  - b) An exoskeleton
  - c) Elliott is correct, flies have backbones

4. They find a strange minibeast on a leaf. It's very wriggly. Nazmin suggests that it might be a baby insect. What is the name for baby insects like this?
  - a) Lamb
  - b) Larva
  - c) Puppy
  - d) Chick
  
5. "It might be a caterpillar," Elliott says. What will a caterpillar change and grow into?
  - a) A bee
  - b) An ant
  - c) A grasshopper
  - d) A butterfly
  
6. They plan to use a simple 'key', a special chart, to help them work out what kind of minibeasts they might find. But the key has gaps. They know that 'insect' belongs on the key somewhere. Which box should it go in?



**Bonus:** Thinking time!

The key is very helpful. But the last minibeast they find is sitting still and they cannot see if it has legs. They think it might be an insect. What feature would suggest that it is NOT an insect?

- a) Three body sections
- b) Two antennae or 'feelers'
- c) Spinnerets for making silk for a web
- d) A hard exoskeleton

*"Look at the answers to see how you did.*

*Make sure to let me and the rest of the education team know your score! See you next week!"*

*Fezziwig*