

A Christmas 'Tree-house'!

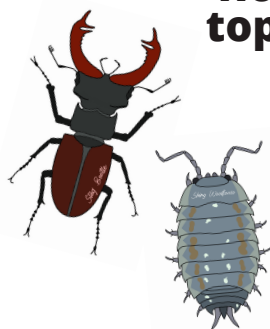
Lots of animals live in trees - their 'habitat' is the forest. Can you match the animal to their home in the tree? Put the animal's number in the correct circle on the tree!



1) Dormice scamper through the branches.



2) Butterflies flit through flowers at the top of the tree.



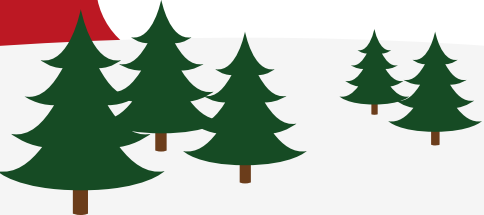
3) Beetles and woodlice live in logs and dead leaves below the trees.



4) Owls roost in hollows in tree trunks.



5) Small birds raise chicks in nests hidden in the leaves.



Send us your answers to see if you're right!

