

Name:

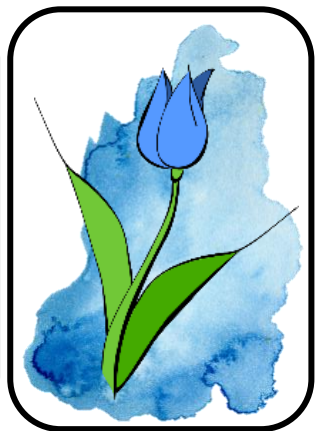
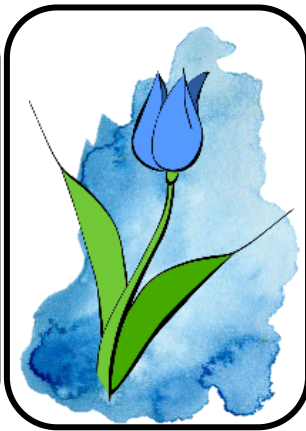
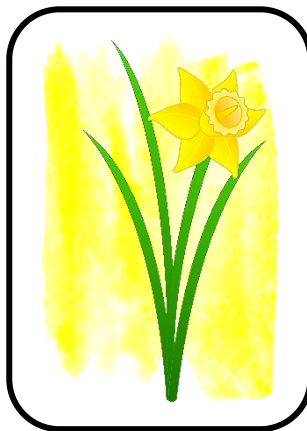
Date:

## Black Science Heroes: Charles Henry Turner

Charles Henry Turner was a very clever zoologist. He was particularly fascinated by insects and made many amazing discoveries, including that insects can hear and learn and that bees can see in colour.

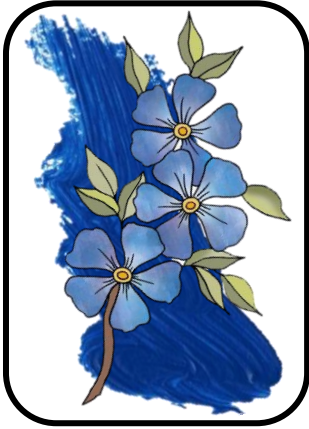
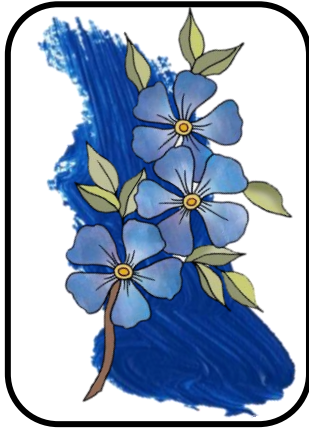
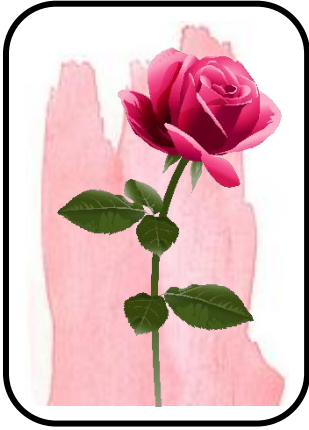
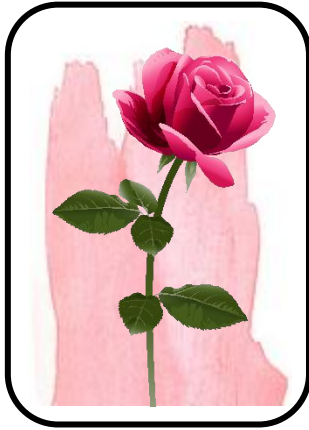
He suggested that bees see in colour and almost take pictures of these colours in their mind, to build up a map of their surroundings. Do you think you could use colours to help your memory like a bee?

*Cut out the cards below, mix them up and lay them face down/so the blank side is up (do not print double-sided). Play by yourself or in a pair, seeing if you can find a pair of flowers. Use the colours to help you. How many pairs can you find in two minutes? Can you find more pairs than your partner?*



Name:

Date:



Did you find the clear colours helped you memorise where each flower was?

---

What other sense(s) apart from sight could you use if you played this with real flowers?

---