



**It's International Women's  
What Where Whens-Day!**

**We're celebrating the work of  
female botanists!**



# Female Scientists and Flora

Many discoveries in the world of botany (plant science) have been made by women!  
Try your hand at making discoveries just like they did!

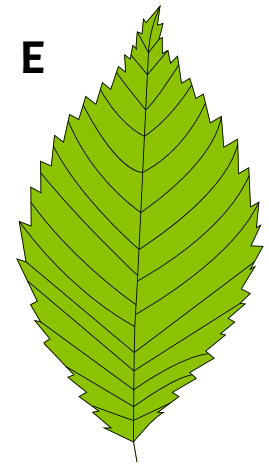
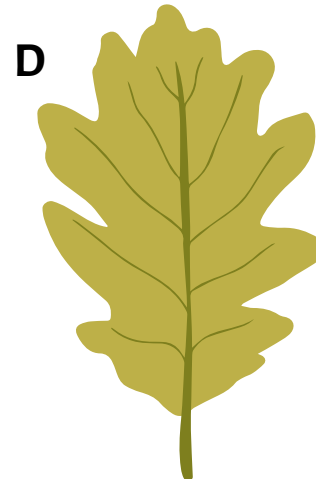
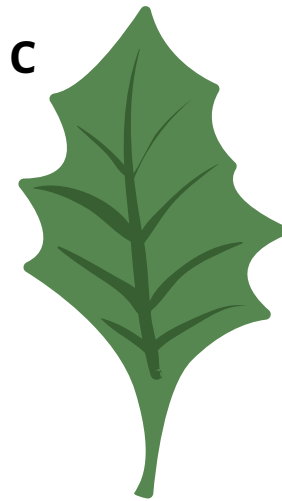
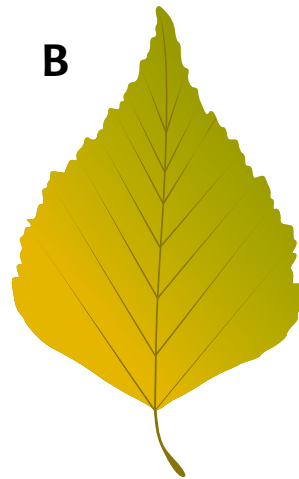
## A Tin of Roses!

Dorothy Cadbury helped run her family business - Cadbury chocolate! But plants were her real passion: 'Cadbury Roses' are even named after her favourite flowers! When she retired, she studied plants and became an expert on pondweed. The pondweed below is dying. Can you spot everything that is killing the pondweed? Think about what ought to be in the pond and what plants need to survive.



# Trekking for Trees

Libby Houston is a rock-climbing botanist. She discovered a new type or 'species' of tree whilst climbing and it was named after her. To be able to find new species, you have to be able to recognise different kinds of tree that we already know about. Can you match the leaves to the type of tree?



1) Oak trees have 'toothed' leaves: they have bumpy edges.

2) Holly leaves are dark green and sharply pointed.

3) Birch leaves are wide at one end and pointed at the other.

4) Elm leaves are pointed with small jagged edges.

5) Maple leaves are red and divided into three parts.



# Flora Frights

Jane Well Webb Loudon wrote books designed to teach women how to garden. Before these, gardening was often done only by men who were trained for it. Her books helped make it a hobby for everyone. She also wrote sci-fi stories, full of fantasy and horror! And there's lots of terrifying plants out there! Decide whether these frightful plant facts are false or terrifyingly true!

**True or False**

**Some plants eat insects, trapping them and digesting their bodily juices!**

\_\_\_\_\_

**Yew trees, which you can usually find in graveyards, are deadly poisonous!**

\_\_\_\_\_

**There's a kind of flower that smells like rotting meat to attract flies!**

\_\_\_\_\_

**Stinging nettles were bred by scientists to sting, naturally they don't hurt!**

\_\_\_\_\_

**Thorns are made of metal the plant took in from the ground - like daggers!**

\_\_\_\_\_

**One Asian plant looks like a bleeding heart, complete with blood droplets!**

\_\_\_\_\_

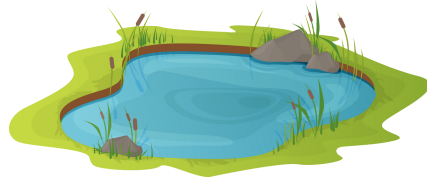


# Grand Garden Designs

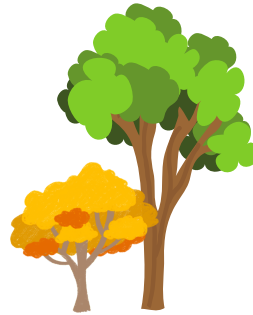
Gertrude Jekyll designed over 400 gardens in her life! There are lots of different things you can put in a garden and many can be really beneficial to nature. Choose some from the pictures below to design your own wildlife garden! What will you put in it to help wildlife?



wildflowers



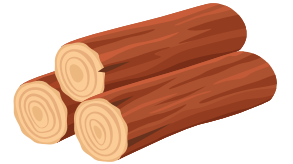
pond



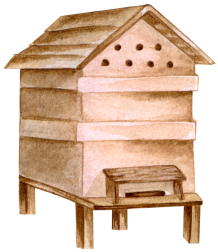
trees



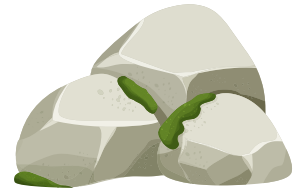
hedgerow



log pile



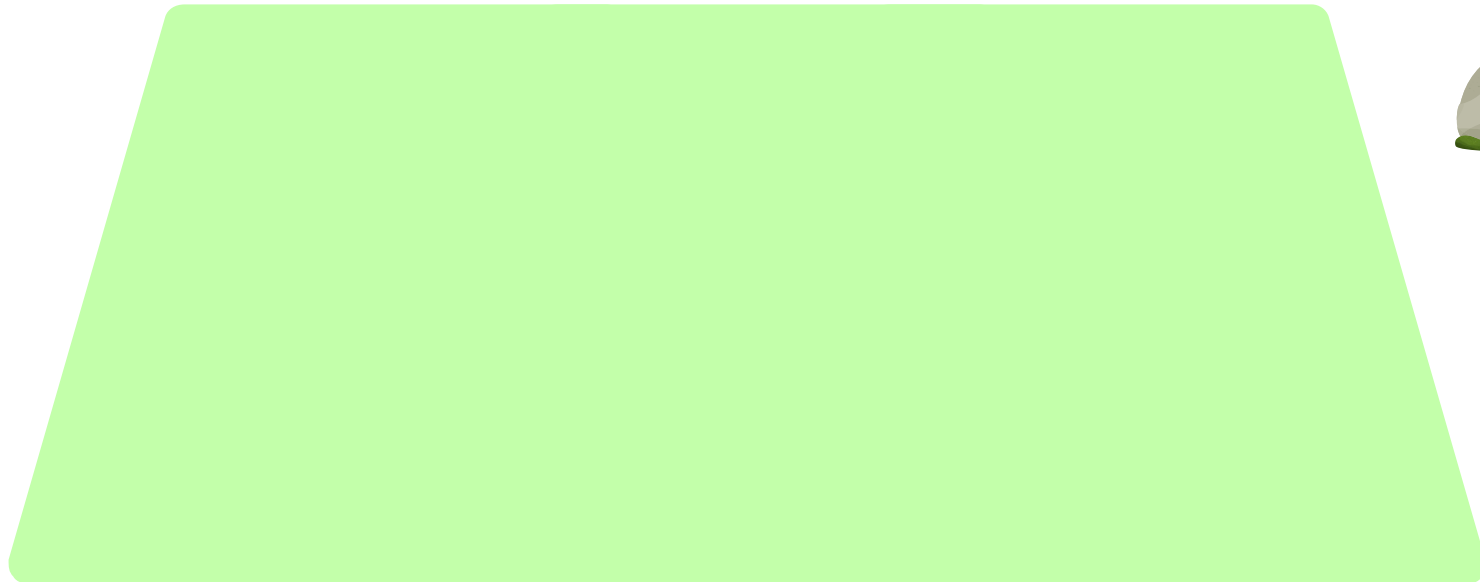
beehive



rock pile



bug hotel



birdbox

# Answers

**A Tin of Roses:** The weeds are being killed by a polluting pipe, shade from large leaves (preventing light from reaching them) and rubbish that has been dumped in the pond.

**Trekking for Trees:** 1D, 2C, 3B, 4E, 5A

**Flora Frights:**

**True or False**

**Some plants eat insects, trapping them and digesting their bodily juices!**

**True**

**Yew trees, which you can usually find in graveyards, are deadly poisonous!**

**True**

**There's a kind of flower that smells like rotting meat to attract flies!**

**True**

**Stinging nettles were bred by scientists to sting, naturally they don't hurt!**

**False**

**Thorns are made of metal the plant took in from the ground - like daggers!**

**False**

**One Asian plant looks like a bleeding heart, complete with blood droplets!**

**True**